



Marching Band 2021-2022

WE APPRECIATE YOU BEING HERE!

Questions? Who can participate

- Any rising 8th student or rising high school students. **The school sees 8th graders as JV players.** Middle school students will need ride the activity bus over after school.

Questions? What is Marching Band?

- Marching Band is the largest pep organization at Cave Spring HS!
- We usually have around 75+ students participating. This includes Color Guard, Percussion and the Marching unit.
- One of the **safest** organizations as well.
 - **NEW!** Background checks for all that assist the band program.
 - Students are never alone while in rehearsal.

Questions? Times, places and needs

- **Band camp, rookie camp, percussion and color guard**
 - All camps will be held on campus.

Questions? Times, places and needs

Band Camp FEES

- There **IS** a fee for participating in Marching Band. The program uses these funds to purchase equipment and necessities for the program. **Just like other organizations at the school. These monies do not go to fund other ensembles.**
- **\$220 for Marching Band \$180 for guard.**
 - Families with multiple members receive \$25 discount per student participating
- **DO NOT LET THIS BE A DETERANT FROM PARTICIPATING.**
- *Please let us know if there are concerns.*

Questions? Times, places and needs

- **Band camp, rookie camp, percussion and color guard**
 - Fees will take care of all needs during the camp week as well as snacks.
 - This will deliver a show shirt, for games days, and cover all transportation and personnel expenses for camp AND the season.
 - *Color guard fees are adjusted*
 - **Pre-Camp is July 14-15 for new marchers, 8 to 12 At CSHS**
 - For all new marchers to begin learning basics and fundamentals for the season

Questions? Times, places and needs

Pre-Camp

- **Pre-Camp is July 14-15 for new marchers, 8 to 12 At CSHS**
 - For all new marchers to begin learning basics and fundamentals for the season.
 - Get to know leadership and a bit of bonding as well.
 - Bring water bottles, snack (if you need, we will have stuff here), **MAKE** sure you have breakfast!, proper attire and footwear (no open toes or sandals). Sunscreen and hat are important and your instrument!

Questions? Times, places and needs

- Band camp, rookie camp, percussion and color guard
- Full Camp is July 18-23 for all members,
 - 8 to 5:30 **At CSMS**
 - **Performance on Friday, 23th promptly at 5:30pm. With a meal afterwards. Meal was catered this last year.**
- Full camp is necessary to begin learning drill and music for the season.

Questions? Times, places and needs

- **Band camp, rookie camp, percussion and color guard**
- We will be able to get into CSHS for lunches, practice and in the event of weather. Restrooms.
- The facility will be able to work with us on ALL rehearsal opportunities.
- Equipment will be locked up overnight.

Questions? Times, places and needs

- **Band and color guard**
- **Needs will be:**
 - **Marchers (includes percussion)-black marching shoes – online or Star City Music band shoes** for performances, not necessary for band camp.
 - Flip folder and lyre, black gloves (2) (excludes percussion)
 - **Guard – Uniform, shoes**
 - Uniforms are purchased by families. Depending on the outfit we choose.

Questions? Parent support

- Calendar updated. **Games and Competitions and Parades**
- Website updated. **Check regularly, please.** [Cave Spring Website](#)
- Emails through **Mail Chimp** and **Synergy when school begins**, usually weekly unless an important message is needing to be sent.

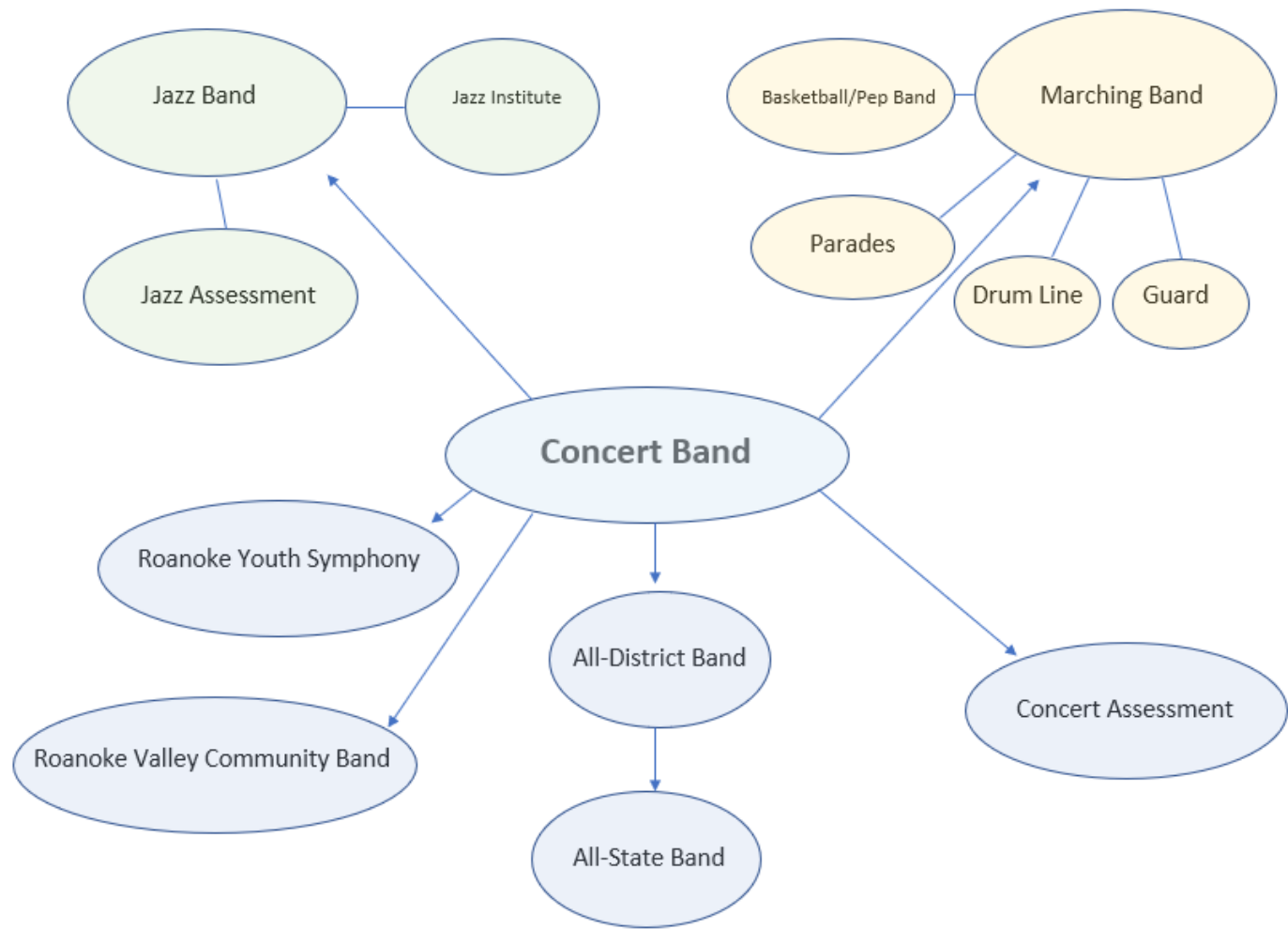
Questions? Parent support

- Chaperone needs and backgrounds checks.
 - We use parents to help be eyes and ears for our program. Chaperones are used and signups will be provided. We can get you in games free but request that if you volunteer to be ready to assist. We have parents that lead individuals like truck and chaperones groups and they will provide clarification for each opportunity.

Questions? Parent support

- Chaperones or support may go on to the website to signup for opportunities (Sign-up Genius)
- If you are interested in gaining County clearance, please see Mr. Q.
- *Want to see who your student hangs around and how they act when they are with their friends? Become a volunteer.*

► FLOW chart of student involvement on the high school level.



Questions?

- Practices prior to and after band camp locations? on CSHS campus –top field, after school. 3:45 to 5:30
- Meals for game day – watch for information coming out. Usually paid at camp.
- Uniform fees are \$21.00 for marching band members (County fee already included in the camp costs). **Color Guard buy their uniforms, so they are not included in this fee.**

- 
- Questions from the floor.